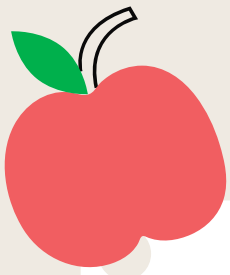




A series of horizontal lines for writing, starting from the top of the page and extending to the bottom, with a small gap between the top line and the first punch hole.



A large white rectangular area with rounded corners, serving as a writing space. It features 20 horizontal lines spaced evenly down the page. On the left side of this area, there are 20 light gray circular punch holes, one aligned with each horizontal line.